

# BOAT HOUSE BULLETIN®



A Factual Report from Mercury Marine

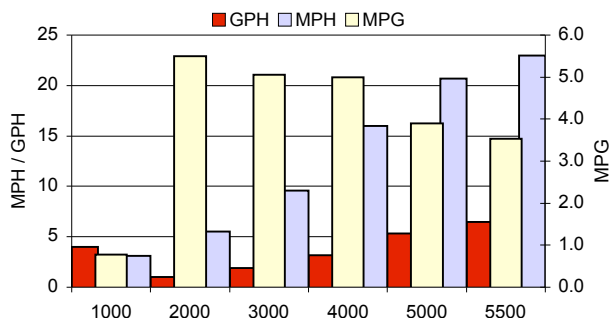
## TEST CONDITIONS

Test Date	6/30/09
Test Conductors	M. Schultz
Boat Weight as Tested (pounds)	2870 est.
Air Temperature (degrees Fahrenheit)	71
Elevation (feet)	1200
Wind Velocity (MPH)	5-10 MPH
Fresh/Salt Water	Fresh
Fuel Level at Testing (gallons)	10

## PERFORMANCE SUMMARY

Top Speed (MPH@RPM)	25.6 @ 6000
Acceleration 0 - 20 MPH (seconds)	5.1

## PERFORMANCE CURVE



## PERFORMANCE DATA

RPM RANGE	SPEED MPH	FUEL GPH	FUEL MPG
1000	3.1	4	0.8
2000	5.5	1	5.5
3000	9.6	1.9	5.1
4000	16	3.2	5.0
5000	20.7	5.3	3.9
5500	23	6.5	3.5
6000	25.6	9.5	2.7

## ENGINE SPECIFICATIONS

Engine	Mercury EFI FourStroke
Horsepower	90
Cylinders	4
Gear Ratio	2.33:1
Model Number	90ELPT
Engine Installation Height (outboard)	20

## BOAT SPECIFICATIONS

Manufacturer	Crestliner
Website	<a href="http://www.crestliner.com">www.crestliner.com</a>
Boat Model	2185 Batata Bay 23"
Bottom Style/Paint	Pontoon
Material	Aluminum
Length (feet)	21' 6"
Beam (feet)	101"
Transom Height (inches)	20
Max HP Capacity	90
Fuel Tank Capacity (gallons)	25
Steering Type	Mechanical
Dry Boat Weight (pounds)	1900
Mounting Bolt Hole (outboard)	#1

## PROPELLER SPECIFICATIONS

Part Number	77340A33
Mercury Name	Black Max
Diameter/Pitch	14 X 13
Number of Blades	3
Material	Aluminum

MERCURY MARINE PO BOX 1939 FOND DU LAC, WISCONSIN 54936-1939

©2006 Mercury Marine, All Rights Reserved. Results on individual boats may vary depending on many factors, including weather and the condition of propeller, lower unit and boat bottom. Boat information based on manufacturer's published specifications.

800-MERCURY MERCURYMARINE.COM