

BOAT HOUSE BULLETIN®



A Factual Report from Mercury Marine

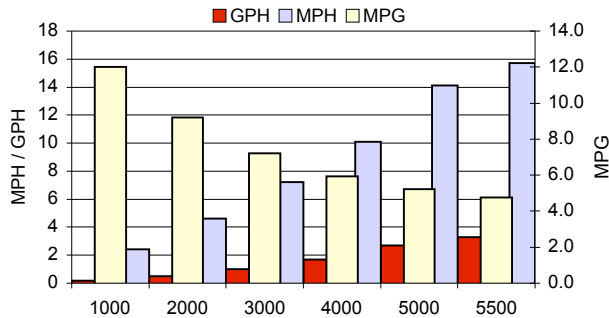
TEST CONDITIONS

Test Date	7/13/09
Test Conductors	M. Schultz
Boat Weight as Tested (pounds)	2520 est.
Air Temperature (degrees Fahrenheit)	75°
Elevation (feet)	1200
Wind Velocity (MPH)	2-5 MPH
Fresh/Salt Water	Fresh
Fuel Level at Testing (gallons)	10

PERFORMANCE SUMMARY

Top Speed (MPH@RPM)	16.8 @ 6020
Acceleration 0 - 10 MPH (seconds)	4.2

PERFORMANCE CURVE



PERFORMANCE DATA

RPM RANGE	SPEED MPH	FUEL GPH	FUEL MPG
1000	2.4	0.2	12.0
2000	4.6	0.5	9.2
3000	7.2	1.0	7.2
4000	10.1	1.7	5.9
5000	14.1	2.7	5.2
5500	15.7	3.3	4.8
6020	16.8	3.9	4.3

ENGINE SPECIFICATIONS

Engine	Mercury 40EFI Big Foot FourStroke
Horsepower	40
Cylinders	4
Gear Ratio	2.33:1
Model Number	40ELPT BF
Engine Installation Height (outboard)	20"

BOAT SPECIFICATIONS

Manufacturer	Crestliner
Website	www.crestliner.com
Boat Model	2185 Escape Angler
Bottom Style/Paint	Pontoon
Material	Aluminum
Length	21' 6"
Beam	101"
Transom Height (inches)	20"
Max HP Capacity	90
Fuel Tank Capacity (gallons)	25
Steering Type	Mechanical
Dry Boat Weight (pounds)	1700
Mounting Bolt Hole (outboard)	#1

PROPELLER SPECIFICATIONS

Part Number	850340A45
Mercury Name	Black Max
Diameter/Pitch	14 X 9
Number of Blades	3
Material	Aluminum

MERCURY MARINE PO BOX 1939 FOND DU LAC, WISCONSIN 54936-1939

©2006 Mercury Marine, All Rights Reserved. Results on individual boats may vary depending on many factors, including weather and the condition of propeller, lower unit and boat bottom. Boat information based on manufacturer's published specifications.

800-MERCURY MERCURYMARINE.COM