

# BOAT HOUSE BULLETIN®



## A Factual Report from Mercury Marine

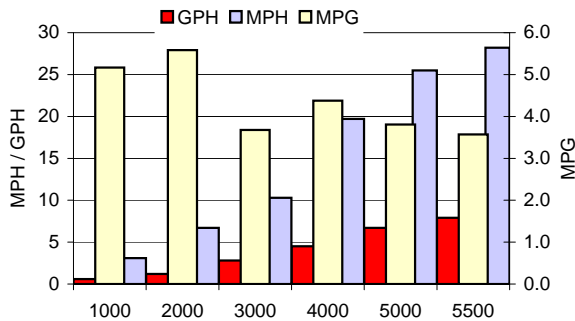
### TEST CONDITIONS

Test Date	3/12/2010
Test Conductors	Crestliner Engineering
Boat Weight as Tested (pounds)	1552
Air Temperature (degrees Fahrenheit)	48°
Elevation (feet)	750'
Wind Velocity (MPH)	5
Fresh/Salt Water	Fresh
Fuel Level at Testing (gallons)	15

### PERFORMANCE SUMMARY

Top Speed (MPH@RPM)	29.2 @ 6000
Acceleration 0 - 20 MPH (seconds)	9
Acceleration 0 - 30 MPH (seconds)	15

### PERFORMANCE CURVE



### PERFORMANCE DATA

RPM RANGE	SPEED MPH	FUEL GPH	FUEL MPG
1000	3.1	0.6	5.2
2000	6.7	1.2	5.6
3000	10.3	2.8	3.7
4000	19.7	4.5	4.4
5000	25.5	6.7	3.8
5500	28.2	7.9	3.6
6000	29.2	9.7	3.0

### ENGINE SPECIFICATIONS

Engine	50 ELPT FourStroke
Horsepower	50
Cylinders	4
Gear Ratio	1.83:1
Engine Installation Height (outboard) (inches)	20"

### BOAT SPECIFICATIONS

Manufacturer	Crestliner
Website	www.crestliner.com
Boat Model	1650 Fish Hawk SC
Bottom Style/Paint	V bottom
Material	Aluminum
Length (feet)	16'8"
Beam (feet)	85 3/4"
Transom Height (inches)	20
Transom Angle (degrees)	13°
Deadrise Angle (degrees)	12°
Max HP Capacity	90
Fuel Tank Capacity (gallons)	20
Steering Type	NFB
Dry Boat Weight (pounds)	1060
Mounting Bolt Hole (outboard)	# 2

### PROPELLER SPECIFICATIONS

Part Number	48-85632A40
Mercury Name	Black Max
Diameter/Pitch	10 7/8 X 11
Number of Blades	3
Material	Aluminum

MERCURY MARINE PO BOX 1939 FOND DU LAC, WISCONSIN 54936-1939

©2006 Mercury Marine, All Rights Reserved. Results on individual boats may vary depending on many factors, including weather and the condition of propeller, lower unit and boat bottom. Boat information based on manufacturer's published specifications.

800-MERCURY MERCURYMARINE.COM

# BOAT HOUSE BULLETIN®



## A Factual Report from Mercury Marine

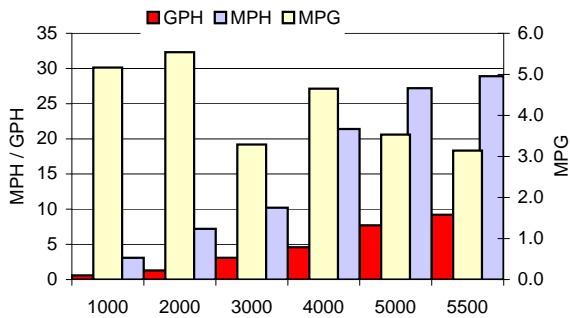
### TEST CONDITIONS

Test Date	3/12/2010
Test Conductors	Crestliner Engineering
Boat Weight as Tested (pounds)	1552
Air Temperature (degrees Fahrenheit)	48°
Elevation (feet)	750'
Wind Velocity (MPH)	5
Fresh/Salt Water	Fresh
Fuel Level at Testing (gallons)	15

### PERFORMANCE SUMMARY

Top Speed (MPH@RPM)	31.5 @ 6000
Acceleration 0 - 20 MPH (seconds)	8
Acceleration 0 - 30 MPH (seconds)	N/A

### PERFORMANCE CURVE



### PERFORMANCE DATA

RPM RANGE	SPEED	FUEL	
	MPH	GPH	MPG
1000	3.1	0.6	5.2
2000	7.2	1.3	5.5
3000	10.2	3.1	3.3
4000	21.4	4.6	4.7
5000	27.2	7.7	3.5
5500	28.9	9.2	3.1
6000	31.5	10.8	2.9

### ENGINE SPECIFICATIONS

Engine	60 ELPT FourStroke
Horsepower	60
Cylinders	4
Gear Ratio	1.83:1
Engine Installation Height (outboard) (inches)	20"

### BOAT SPECIFICATIONS

Manufacturer	Crestliner
Website	www.crestliner.com
Boat Model	1650 Fish Hawk SC
Bottom Style/Paint	V bottom
Material	Aluminum
Length (feet)	16'8"
Beam (feet)	85 3/4"
Transom Height (inches)	20"
Transom Angle (degrees)	13°
Deadrise Angle (degrees)	12°
Max HP Capacity	90
Fuel Tank Capacity (gallons)	20
Steering Type	NFB
Dry Boat Weight (pounds)	1060
Mounting Bolt Hole (outboard)	# 2

### PROPELLER SPECIFICATIONS

Part Number	48-73134A40
Mercury Name	Black Max
Diameter/Pitch	10 5/8 X 12
Number of Blades	3
Material	Aluminum

MERCURY MARINE PO BOX 1939 FOND DU LAC, WISCONSIN 54936-1939

©2006 Mercury Marine, All Rights Reserved. Results on individual boats may vary depending on many factors, including weather and the condition of propeller, lower unit and boat bottom. Boat information based on manufacturer's published specifications.

800-MERCURY MERCURYMARINE.COM

# BOAT HOUSE BULLETIN®



A Factual Report from Mercury Marine

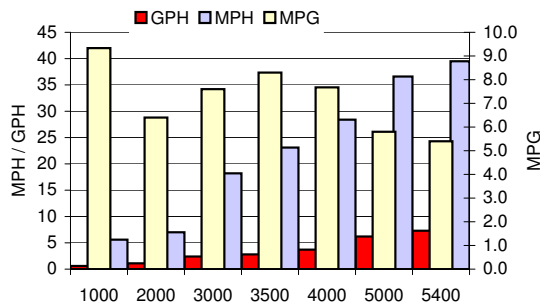
## TEST CONDITIONS

Test Date	1/7/2011
Test Conductors	Crestliner Engineering
Boat Weight as Tested (pounds)	1,560
Air Temperature (degrees Fahrenheit)	86°
Elevation (feet)	745'
Wind Velocity (MPH)	0-5
Fresh/Salt Water	Fresh
Fuel Level at Testing (gallons)	Full - 20

## PERFORMANCE SUMMARY

Top Speed (MPH@RPM)	39.5 @ 5400
Acceleration 0 - 20 MPH (seconds)	
Acceleration 0 - 30 MPH (seconds)	

## PERFORMANCE CURVE



## PERFORMANCE DATA

RPM	SPEED	FUEL	FUEL
RANGE	MPH	GPH	MPG
1000	5.6	0.6	9.3
2000	7.0	1.1	6.4

## ENGINE SPECIFICATIONS

Engine	90 Optimax
Horsepower	90
Cylinders	3 in line
Gear Ratio	2.33:1
Engine Installation Height (outboard) (inches)	20"

## BOAT SPECIFICATIONS

Manufacturer	Crestliner
Website	<a href="http://www.crestliner.com">www.crestliner.com</a>
Boat Model	1650 Fish Hawk WT
Bottom Style/Paint	V bottom
Material	Aluminum
Length (feet)	16'8"
Beam (feet)	85 3/4"
Transom Height (inches)	20"
Transom Angle (degrees)	
Deadrise Angle (degrees)	12°
Max HP Capacity	90
Fuel Tank Capacity (gallons)	20
Steering Type	NFB
Dry Boat Weight (pounds)	1,060
Mounting Bolt Hole (outboard)	

## PROPELLER SPECIFICATIONS

Part Number	
Mercury Name	Black Max
Diameter/Pitch	13 7/8 X 19
Number of Blades	3
Material	Aluminum

# BOAT HOUSE BULLETIN®



A Factual Report from Mercury Marine

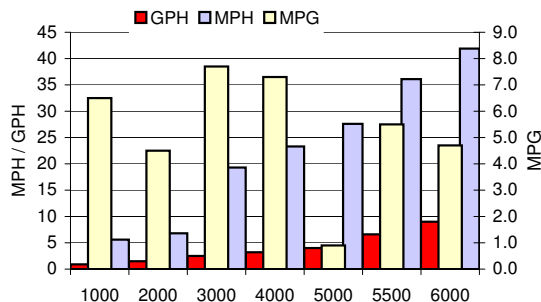
## TEST CONDITIONS

Test Date	6/24/2011
Test Conductors	Crestliner Engineering (SV/KK)
Boat Weight as Tested (pounds)	2350
Air Temperature (degrees Fahrenheit)	68 deg
Elevation (feet)	745
Wind Velocity (MPH)	0-5
Fresh/Salt Water	Fresh
Fuel Level at Testing (gallons)	Full - 24

## PERFORMANCE SUMMARY

Top Speed (MPH@RPM)	43.2 @ 6000
Acceleration 0 - 20 MPH (seconds)	8
Acceleration 0 - 30 MPH (seconds)	11

## PERFORMANCE CURVE



## PERFORMANCE DATA

RPM	SPEED	FUEL	FUEL
RANGE	MPH	GPH	MPG
1000	5.6	0.9	6.5
2000	6.8	1.5	4.5

## ENGINE SPECIFICATIONS

Engine	115 4 stroke EFI
Horsepower	115
Cylinders	4 in-line
Gear Ratio	2.33:1
Engine Installation Height (outboard) (inches)	25"

## BOAT SPECIFICATIONS

Manufacturer	Crestliner
Website	<a href="http://www.crestliner.com">www.crestliner.com</a>
Boat Model	1750 Fish Hawk SC
Bottom Style/Paint	V bottom
Material	Aluminum
Length (feet)	17'6"
Beam (inches)	95"
Transom Height (inches)	25"
Transom Angle (degrees)	13°
Deadrise Angle (degrees)	12°
Max HP Capacity	125
Fuel Tank Capacity (gallons)	24
Steering Type	NFB
Dry Boat Weight (pounds)	1100
Mounting Bolt Hole (outboard)	# 2

## PROPELLER SPECIFICATIONS

Part Number	1869350
Mercury Name	Black Max
Diameter/Pitch	19
Number of Blades	3
Material	Aluminum

# BOAT HOUSE BULLETIN®



A Factual Report from Mercury Marine

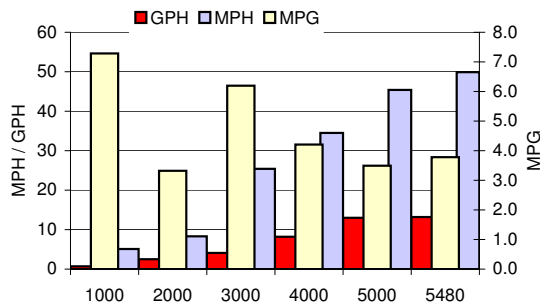
## TEST CONDITIONS

Test Date	6/24/2011
Test Conductors	Crestliner Engineering (SV/KK)
Boat Weight as Tested (pounds)	1770
Air Temperature (degrees Fahrenheit)	68
Elevation (feet)	745
Wind Velocity (MPH)	0-5
Fresh/Salt Water	Fresh
Fuel Level at Testing (gallons)	Half - 15

## PERFORMANCE SUMMARY

Top Speed (MPH@RPM)	49.9 @ 5480
Acceleration 0 - 20 MPH (seconds)	5
Acceleration 0 - 30 MPH (seconds)	7

## PERFORMANCE CURVE



## PERFORMANCE DATA

RPM	SPEED	FUEL	FUEL
RANGE	MPH	GPH	MPG
1000	5.1	0.7	7.3
2000	10.2	1.4	4.5
3000	25.5	2.5	4.5
4000	35.0	4.0	3.5
5000	45.0	5.5	3.0
5480	49.9	6.5	2.8

## ENGINE SPECIFICATIONS

Engine	150 Pro XS OptiMax
Horsepower	150
Cylinders	V-6
Gear Ratio	1.87:1
Engine Installation Height (outboard) (inches)	25"

## BOAT SPECIFICATIONS

Manufacturer	Crestliner
Website	<a href="http://www.crestliner.com">www.crestliner.com</a>
Boat Model	1850 Fish Hawk WT
Bottom Style/Paint	V bottom
Material	Aluminum
Length (feet)	18'6"
Beam (inches)	95 1/2"
Transom Height (inches)	25"
Transom Angle (degrees)	13°
Deadrise Angle (degrees)	12°
Max HP Capacity	150
Fuel Tank Capacity (gallons)	31
Steering Type	Hydraulic
Dry Boat Weight (pounds)	1250
Mounting Bolt Hole (outboard)	# 2

## PROPELLER SPECIFICATIONS

Part Number	
Mercury Name	Tempest Plus
Diameter/Pitch	19
Number of Blades	3
Material	Stainless Steel