

# BOAT HOUSE BULLETIN®



## A Factual Report from Mercury Marine

### TEST CONDITIONS

Test Date	6/9/09
Test Conductors	MS / SM
Boat Weight as Tested (pounds)	N/A
Air Temperature (degrees Fahrenheit)	65°
Elevation (feet)	1200'
Wind Velocity (MPH)	N/A
Fresh/Salt Water	Fresh
Fuel Level at Testing (gallons)	10

### ENGINE SPECIFICATIONS

Engine	90 4 - Stroke
Horsepower	90
Cylinders	4
Gear Ratio	2.33:1
Model Number	90ELPT
Engine Installation Height (outboard) (inches)	20"

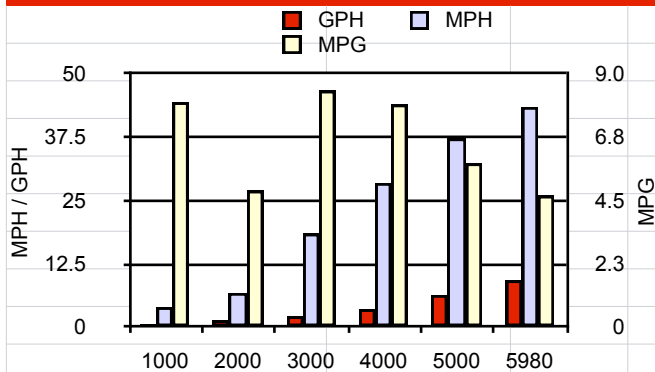
### PERFORMANCE SUMMARY

Top Speed (MPH@RPM)	43.5 @ 5980
Acceleration 0 - 20 MPH (seconds)	4.8
Acceleration 0 - 30 MPH (seconds)	8

### BOAT SPECIFICATIONS

Manufacturer	Crestliner
Website	<a href="http://www.crestliner.com">www.crestliner.com</a>
Boat Model	1600 Super Hawk
Bottom Style/Paint	Deep V
Material	Aluminum
Length (feet)	16'3"
Beam (feet)	85 3/4"
Transom Height (inches)	20"
Transom Angle (degrees)	14°
Deadrise Angle (degrees)	12°
Max HP Capacity	90
Fuel Tank Capacity (gallons)	20
Steering Type	Mechanical
Dry Boat Weight (pounds)	1000
X-Dimension (MerCruiser)	N/A
Mounting Bolt Hole (outboard)	#2

### PERFORMANCE CURVE



### PERFORMANCE DATA

RPM	SPEED	FUEL	FUEL
RANGE	MPH	GPH	MPG
1000	4	0.5	8.0
2000	6.8	1.4	4.9
3000	18.5	2.2	8.4
4000	28.5	3.6	7.9
5000	37.3	6.4	5.8
5980	43.5	9.3	4.7

### PROPELLER SPECIFICATIONS

Part Number	48-77346A45
Mercury Name	Black Max
Diameter/Pitch	13" / 19"
Number of Blades	3
Material	Aluminum

MERCURY MARINE PO BOX 1939 FOND DU LAC, WISCONSIN 54936-1939

©2006 Mercury Marine, All Rights Reserved. Results on individual boats may vary depending on many factors, including weather and the condition of propeller, lower unit and boat bottom. Boat information based on manufacturer's published specifications.

800-MERCURY MERCURYMARINE.COM

# BOAT HOUSE BULLETIN®



## A Factual Report from Mercury Marine

### TEST CONDITIONS

Test Date	5/12/10
Test Conductors	MS / MN
Boat Weight as Tested (pounds)	2280 est.
Air Temperature (degrees Fahrenheit)	45
Elevation (feet)	1280
Wind Velocity (MPH)	5-10
Fresh/Salt Water	Fresh
Fuel Level at Testing (gallons)	15

### ENGINE SPECIFICATIONS

Engine	Mercury Optimax
Horsepower	90
Cylinders	3
Gear Ratio	2.33:1
Model Number	90XLPT
Engine Installation Height (outboard) (inches)	25"

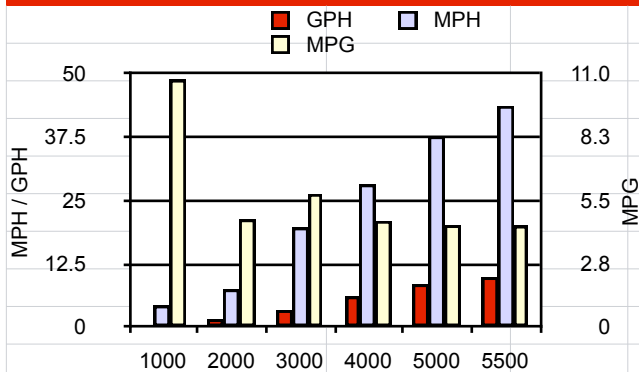
### PERFORMANCE SUMMARY

Top Speed (MPH@RPM)	43.7 @ 5500
Acceleration 0 - 20 MPH (seconds)	4.9
Acceleration 0 - 30 MPH (seconds)	7.1

### BOAT SPECIFICATIONS

Manufacturer	<a href="http://www.crestliner.com">Crestliner</a>
Website	<a href="http://www.crestliner.com">www.crestliner.com</a>
Boat Model	1700 Super Hawk
Bottom Style/Paint	Deep V
Material	Aluminum
Length (feet)	17' 1"
Beam (inches)	89
Transom Height (inches)	25
Transom Angle (degrees)	13
Deadrise Angle (degrees)	17
Max HP Capacity	140
Fuel Tank Capacity (gallons)	33
Steering Type	Mechanical
Dry Boat Weight (pounds)	1300
Mounting Bolt Hole (outboard)	#2

### PERFORMANCE CURVE



### PERFORMANCE DATA

RPM	SPEED	FUEL	FUEL
RANGE	MPH	GPH	MPG
1000	4.3	0.4	10.8
2000	7.5	1.6	4.7
3000	19.7	3.4	5.8
4000	28.2	6.1	4.6
5000	37.7	8.5	4.4
5500	43.7	9.9	4.4

### PROPELLER SPECIFICATIONS

Part Number	48-77346A45
Mercury Name	Black Max
Diameter/Pitch	13 X 19
Number of Blades	3
Material	Aluminum

MERCURY MARINE PO BOX 1939 FOND DU LAC, WISCONSIN 54936-1939

©2006 Mercury Marine, All Rights Reserved. Results on individual boats may vary depending on many factors, including weather and the condition of propeller, lower unit and boat bottom. Boat information based on manufacturer's published specifications.

800-MERCURY MERCURYMARINE.COM

# BOAT HOUSE BULLETIN®



## A Factual Report from Mercury Marine

### TEST CONDITIONS

Test Date	6/10/09
Test Conductors	MS / KK
Boat Weight as Tested (pounds)	N/A
Air Temperature (degrees Fahrenheit)	62°
Elevation (feet)	1200
Wind Velocity (MPH)	N/A
Fresh/Salt Water	Fresh
Fuel Level at Testing (gallons)	10

### ENGINE SPECIFICATIONS

Engine	Optimax
Horsepower	150
Cylinders	6
Gear Ratio	02:27.0
Model Number	150XL
Engine Installation Height (outboard) (inches)	25"

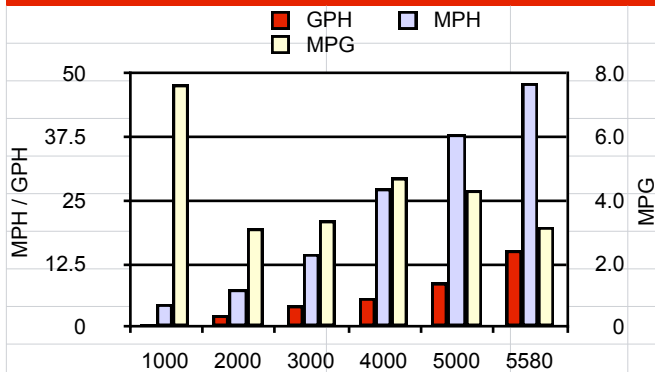
### PERFORMANCE SUMMARY

Top Speed (MPH@RPM)	<u>48.2@5580</u>
Acceleration 0 - 20 MPH (seconds)	4.3
Acceleration 0 - 30 MPH (seconds)	7

### BOAT SPECIFICATIONS

Manufacturer	Crestliner
Website	<a href="http://www.crestliner.com">www.crestliner.com</a>
Boat Model	1800 Super Hawk
Bottom Style/Paint	Deep V
Material	Aluminum
Length (feet)	18'2"
Beam (feet)	95"
Transom Height (inches)	25"
Transom Angle (degrees)	13°
Deadrise Angle (degrees)	17°
Max HP Capacity	175
Fuel Tank Capacity (gallons)	33
Steering Type	Hydraulic
Dry Boat Weight (pounds)	1470
X-Dimension (MerCruiser)	N/A
Mounting Bolt Hole (outboard)	#2

### PERFORMANCE CURVE



### PERFORMANCE DATA

RPM	SPEED	FUEL	FUEL
RANGE	MPH	GPH	MPG
1000	4.6	0.6	7.7
2000	7.5	2.4	3.1
3000	14.5	4.3	3.4
4000	27.4	5.8	4.7
5000	38.1	8.8	4.3
5580	48.2	15.2	3.2

### PROPELLER SPECIFICATIONS

Part Number	48-832830A45
Mercury Name	Black Max
Diameter/Pitch	141/2" X 19"
Number of Blades	3
Material	Aluminum

MERCURY MARINE PO BOX 1939 FOND DU LAC, WISCONSIN 54936-1939

©2006 Mercury Marine, All Rights Reserved. Results on individual boats may vary depending on many factors, including weather and the condition of propeller, lower unit and boat bottom. Boat information based on manufacturer's published specifications.

800-MERCURY MERCURYMARINE.COM

# BOAT HOUSE BULLETIN®



A Factual Report from Mercury Marine

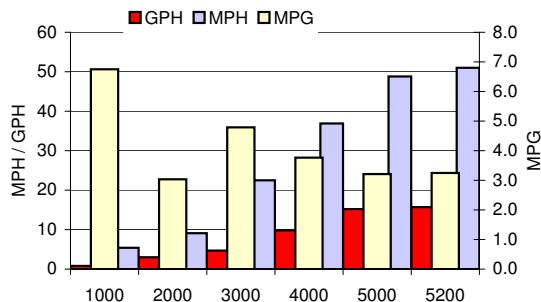
## TEST CONDITIONS

Test Date	6/24/2011
Test Conductors	Crestliner Engineering (SV/KK)
Boat Weight as Tested (pounds)	2100
Air Temperature (degrees Fahrenheit)	68
Elevation (feet)	745
Wind Velocity (MPH)	0-5
Fresh/Salt Water	Fresh
Fuel Level at Testing (gallons)	Full - 33

## PERFORMANCE SUMMARY

Top Speed (MPH@RPM)	51.0 @ 5200
Acceleration 0 - 20 MPH (seconds)	5
Acceleration 0 - 30 MPH (seconds)	7

## PERFORMANCE CURVE



## PERFORMANCE DATA

RPM	SPEED	FUEL	FUEL
RANGE	MPH	GPH	MPG
1000	5.4	0.8	6.8
2000	22.0	3.0	7.3
3000	36.0	4.5	8.0
4000	48.0	6.0	8.0
5000	51.0	7.0	7.3
5200	51.0	7.0	7.3

## ENGINE SPECIFICATIONS

Engine	175 Pro XS OptiMax
Horsepower	175
Cylinders	V-6
Gear Ratio	1.87:1
Engine Installation Height (outboard) (inches)	25"

## BOAT SPECIFICATIONS

Manufacturer	Crestliner
Website	<a href="http://www.crestliner.com">www.crestliner.com</a>
Boat Model	1800 Super Hawk
Bottom Style/Paint	V bottom
Material	Aluminum
Length (feet)	18'2"
Beam (inches)	95"
Transom Height (inches)	25"
Transom Angle (degrees)	13°
Deadrise Angle (degrees)	17°
Max HP Capacity	175
Fuel Tank Capacity (gallons)	33
Steering Type	Hydraulic
Dry Boat Weight (pounds)	1470
Mounting Bolt Hole (outboard)	# 2

## PROPELLER SPECIFICATIONS

Part Number	
Mercury Name	Tempest
Diameter/Pitch	21
Number of Blades	3
Material	Stainless Steel

# BOAT HOUSE BULLETIN®



## A Factual Report from Mercury Marine

### TEST CONDITIONS

Test Date	6/10/09
Test Conductors	MS
Boat Weight as Tested (pounds)	N/A
Air Temperature (degrees Fahrenheit)	61°F
Elevation (feet)	1200
Wind Velocity (MPH)	N/A
Fresh/Salt Water	Fresh
Fuel Level at Testing (gallons)	15

### ENGINE SPECIFICATIONS

Engine	Verado
Horsepower	175
Cylinders	4
Gear Ratio	2.08:1
Model Number	175XL
Engine Installation Height (outboard) (inches)	25"

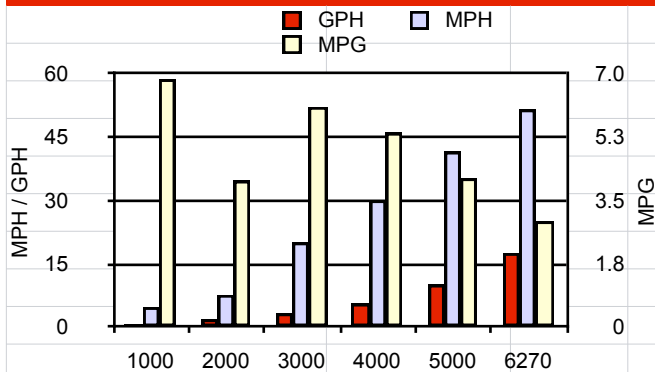
### PERFORMANCE SUMMARY

Top Speed (MPH@RPM)	<u>51.6@6270</u>
Acceleration 0 - 20 MPH (seconds)	3.9
Acceleration 0 - 30 MPH (seconds)	7.6

### BOAT SPECIFICATIONS

Manufacturer	Crestliner
Website	<a href="http://www.crestliner.com">www.crestliner.com</a>
Boat Model	1900 Super Hawk
Bottom Style/Paint	Deep V
Material	Aluminum
Length (feet)	19' 7"
Beam (feet)	99"
Transom Height (inches)	25"
Transom Angle (degrees)	13°
Deadrise Angle (degrees)	17°
Max HP Capacity	200
Fuel Tank Capacity (gallons)	40
Steering Type	Hydraulic
Dry Boat Weight (pounds)	1630
X-Dimension (MerCruiser)	N/A
Mounting Bolt Hole (outboard)	#2

### PERFORMANCE CURVE



### PERFORMANCE DATA

RPM	SPEED	FUEL	FUEL
RANGE	MPH	GPH	MPG
1000	4.8	0.7	6.9
2000	7.7	1.9	4.1
3000	20.1	3.3	6.1
4000	30.1	5.6	5.4
5000	41.6	10.1	4.1
6270	51.6	17.6	2.9

### PROPELLER SPECIFICATIONS

Part Number	48-825860
Mercury Name	Tempest
Diameter/Pitch	14 5/8" X 19"
Number of Blades	3
Material	SS

MERCURY MARINE PO BOX 1939 FOND DU LAC, WISCONSIN 54936-1939

©2006 Mercury Marine, All Rights Reserved. Results on individual boats may vary depending on many factors, including weather and the condition of propeller, lower unit and boat bottom. Boat information based on manufacturer's published specifications.

800-MERCURY MERCURYMARINE.COM

# BOAT HOUSE BULLETIN®



## A Factual Report from Mercury Marine

### TEST CONDITIONS

Test Date	5/12/10
Test Conductors	MS / MN
Boat Weight as Tested (pounds)	2666 est.
Air Temperature (degrees Fahrenheit)	45
Elevation (feet)	1280
Wind Velocity (MPH)	5-10
Fresh/Salt Water	Fresh
Fuel Level at Testing (gallons)	15

### ENGINE SPECIFICATIONS

Engine	Mercury 175 Pro XS Optimax
Horsepower	175
Cylinders	6
Gear Ratio	1.87:1
Model Number	175 XL
Engine Installation Height (outboard) (inches)	25

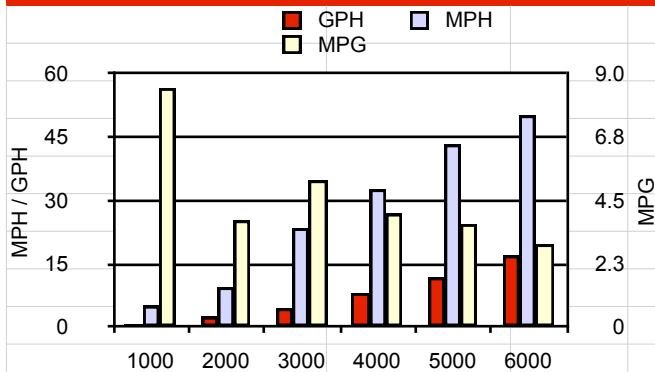
### PERFORMANCE SUMMARY

Top Speed (MPH@RPM)	50.2 @ 6000
Acceleration 0 - 20 MPH (seconds)	3.5
Acceleration 0 - 30 MPH (seconds)	5.6

### BOAT SPECIFICATIONS

Manufacturer	Crestliner
Website	<a href="http://www.crestliner.com">www.crestliner.com</a>
Boat Model	1900 Super Hawk
Bottom Style/Paint	Deep V
Material	Aluminum
Length (feet)	19' 7"
Beam (inches)	99
Transom Height (inches)	25
Transom Angle (degrees)	13
Deadrise Angle (degrees)	17
Max HP Capacity	200
Fuel Tank Capacity (gallons)	40
Steering Type	Mechanical
Dry Boat Weight (pounds)	1630
Mounting Bolt Hole (outboard)	#2

### PERFORMANCE CURVE



### PROPELLER SPECIFICATIONS

Part Number	48-832830A45
Mercury Name	Black Max
Diameter/Pitch	14 1/2 X 19
Number of Blades	3
Material	Aluminum

### PERFORMANCE DATA

RPM	SPEED	FUEL	FUEL
RANGE	MPH	GPH	MPG
1000	5.1	0.6	8.5
2000	9.5	2.5	3.8
3000	23.5	4.5	5.2
4000	32.7	8.1	4.0
5000	43.3	11.8	3.7
6000	50.2	17	3.0

MERCURY MARINE PO BOX 1939 FOND DU LAC, WISCONSIN 54936-1939

©2006 Mercury Marine, All Rights Reserved. Results on individual boats may vary depending on many factors, including weather and the condition of propeller, lower unit and boat bottom. Boat information based on manufacturer's published specifications.

800-MERCURY MERCURYMARINE.COM