

# BOAT HOUSE BULLETIN®



A Factual Report from Mercury Marine

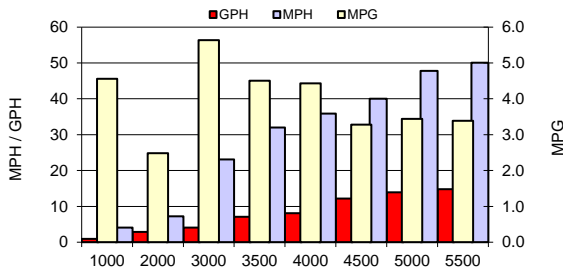
## TEST CONDITIONS

Test Date	5/29/2018
Test Conductor	BC/SM
Boat Weight as Tested (lbs)	2920
Air Temperature (degrees F)	94
Elevation (ft)	751
Sea State (calm / smooth / slight / moderate)	Slight
Wind Velocity range (mph)	15-20
Fresh/Salt Water	Fresh
Fuel Level at Testing (gal)	3/4 Tank

## PERFORMANCE SUMMARY

Top Speed (mph @ rpm)	56.2 @ 6200
Acceleration 0 - 20 mph (seconds)	3.1
Acceleration 0 - 30 mph (seconds)	4.7
Best Fuel Economy (mpg @ rpm)	4.5 MPG @ 3500

## PERFORMANCE CURVE



## PERFORMANCE DATA

RPM	SPEED	FUEL CONSUMPTION	FUEL CONSUMPTION	RANGE	SOUND
RANGE	MPH	GPH	MPG	MILES	dB-A
1000	4.1	0.9	4.6		
2000	7.2	2.9	2.5		
3000	23.1	4.1	5.6		
3500	32	7.1	4.5		
4000	35.9	8.1	4.4		
4500	40	12.2	3.3		
5000	47.8	13.9	3.4		
5500	50.1	14.8	3.4		
6000	53.2	17.3	3.1		
Top RPM 6200	56.2	18.2	3.1		

## ENGINE SPECIFICATIONS

Number of Engines	1
Engine	200 Pro XS
Horsepower	200
Cylinders	8
Drive or gear model and ratio	TMII 1.75:1

## BOAT SPECIFICATIONS

Region/s sold	
Manufacturer	Crestliner
Website	<a href="http://www.crestliner.com">www.crestliner.com</a>
Boat Model	PT 20
Boat Type	Aluminum - console
Material	Aluminum
Length (in)	20'5"
Beam (in)	96"
Max hp Capacity	200 HP
Fuel Tank Capacity (gal)	32 Gallons
Steering Type	Hydraulic
Dry Boat Weight (lbs)	1567
Mounting Bolt Hole (outboard)	3rd

## PROPELLER SPECIFICATIONS

Part Number	48-8M8026790
Part Number	
Part Number	
Part Number	
Mercury Name	Tempest Plus
Material	Stainless Steel
Diameter/Pitch	14.625 x 17
Number of Blades	3

MERCURY MARINE PO BOX 1939 FOND DU LAC, WISCONSIN 54936-1939

©2015 Mercury Marine, All Rights Reserved. Results on individual boats may vary depending on many factors, including weather and the condition of propeller, lower unit and boat bottom. Boat information based on manufacturer's published specifications.

800-MERCURY MERCURYMARINE.COM