

# BOAT HOUSE BULLETIN®



A Factual Report from Mercury Marine

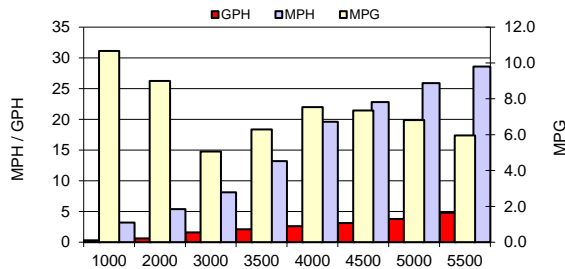
## TEST CONDITIONS

Test Date	5/16/2018
Test Conductor	BC
Boat Weight as Tested (lbs)	2010 lbs.
Air Temperature (degrees F)	89
Elevation (ft)	937
Sea State (calm / smooth / slight / moderate)	Calm
Wind Velocity range (mph)	0-5
Fresh/Salt Water	Fresh
Fuel Level at Testing (gal)	Full

## PERFORMANCE SUMMARY

Top Speed (mph @ rpm)	32.4 @ 6000 RPM
Acceleration 0 - 20 mph (seconds)	8.2
Acceleration 0 - 30 mph (seconds)	
Best Fuel Economy (mpg @ rpm)	7.5MPG @ 4000RPM

## PERFORMANCE CURVE



## PERFORMANCE DATA

RPM	SPEED	FUEL CONSUMPTION	FUEL CONSUMPTION	RANGE	SOUND
RANGE	MPH	GPH	MPG	MILES	dB-A
1000	3.2	0.3	10.7		
2000	5.4	0.6	9.0		
3000	8.1	1.6	5.1		
3500	13.2	2.1	6.3		
4000	19.6	2.6	7.5		
4500	22.8	3.1	7.4		
5000	25.9	3.8	6.8		
5500	28.6	4.8	6.0		
6000	32.4	5.4	6.0		
Top RPM					

## ENGINE SPECIFICATIONS

Number of Engines	1
Engine	60 HP 4 Stroke
Horsepower	60HP
Cylinders	4
Drive or gear model and ratio	1.83:1

## BOAT SPECIFICATIONS

Region/s sold	
Manufacturer	Crestliner
Website	<a href="http://www.crestliner.com">www.crestliner.com</a>
Boat Model	VT 17 C
Boat Type	Aluminum - console
Material	Aluminum
Length (in)	176"
Beam (in)	92.25"
Max hp Capacity	80HP
Fuel Tank Capacity (gal)	21 Gallons
Steering Type	Cable
Dry Boat Weight (lbs)	1106 lbs.
Mounting Bolt Hole (outboard)	2nd Hole

## PROPELLER SPECIFICATIONS

Part Number	8M8026030
Part Number	
Part Number	
Part Number	
Mercury Name	Spitfire
Material	Aluminum
Diameter/Pitch	10.375 x 13
Number of Blades	4

MERCURY MARINE PO BOX 1939 FOND DU LAC, WISCONSIN 54936-1939

©2015 Mercury Marine, All Rights Reserved. Results on individual boats may vary depending on many factors, including weather and the condition of propeller, lower unit and boat bottom. Boat information based on manufacturer's published specifications.

800-MERCURY MERCURYMARINE.COM