

# BOAT HOUSE BULLETIN®



A Factual Report from Mercury Marine

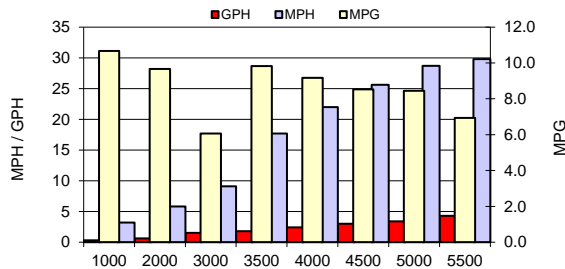
## TEST CONDITIONS

Test Date	5/16/2018
Test Conductor	BC
Boat Weight as Tested (lbs)	1376 lbs
Air Temperature (degrees F)	78
Elevation (ft)	937 ft.
Sea State (calm / smooth / slight / moderate)	Calm
Wind Velocity range (mph)	0-5
Fresh/Salt Water	Fresh
Fuel Level at Testing (gal)	Full

## PERFORMANCE SUMMARY

Top Speed (mph @ rpm)	31.1MPH @ 5700 RPM
Acceleration 0 - 20 mph (seconds)	
Acceleration 0 - 30 mph (seconds)	
Best Fuel Economy (mpg @ rpm)	9.8 MPG @ 3500 RPM

## PERFORMANCE CURVE



## PERFORMANCE DATA

RPM	SPEED	FUEL CONSUMPTION	FUEL CONSUMPTION	RANGE	SOUND
RANGE	MPH	GPH	MPG	MILES	dB-A
1000	3.2	0.3	10.7		
2000	5.8	0.6	9.7		
3000	9.1	1.5	6.1		
3500	17.7	1.8	9.8		
4000	22	2.4	9.2		
4500	25.6	3	8.5		
5000	28.7	3.4	8.4		
5500	29.8	4.3	6.9		
6000					
Top RPM 5700	31.1	4.9	6.3		

## ENGINE SPECIFICATIONS

Number of Engines	1
Engine	50 HP Tiller
Horsepower	50
Cylinders	4
Drive or gear model and ratio	1.83:1

## BOAT SPECIFICATIONS

Region/s sold	
Manufacturer	Crestliner
Website	<a href="http://www.crestliner.com">www.crestliner.com</a>
Boat Model	1760 Retriever Jon Deluxe
Boat Type	Aluminum - tiller
Material	Aluminum
Length (in)	16'10"
Beam (in)	85"
Max hp Capacity	60HP
Fuel Tank Capacity (gal)	Portable
Steering Type	Tiller
Dry Boat Weight (lbs)	707
Mounting Bolt Hole (outboard)	3rd hole

## PROPELLER SPECIFICATIONS

Part Number	
Part Number	
Part Number	
Part Number	
Mercury Name	Spitfire
Material	Aluminum
Diameter/Pitch	10.6 x 12
Number of Blades	4

MERCURY MARINE PO BOX 1939 FOND DU LAC, WISCONSIN 54936-1939

©2015 Mercury Marine, All Rights Reserved. Results on individual boats may vary depending on many factors, including weather and the condition of propeller, lower unit and boat bottom. Boat information based on manufacturer's published specifications.

800-MERCURY MERCURYMARINE.COM