

BOAT HOUSE BULLETIN®



A Factual Report from Mercury Marine

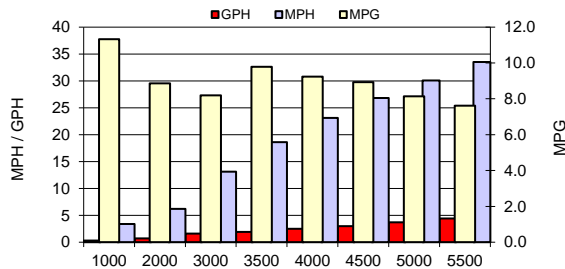
TEST CONDITIONS

Test Date	5/16/2018
Test Conductor	BC
Boat Weight as Tested (lbs)	1120 lbs.
Air Temperature (degrees F)	89
Elevation (ft)	937
Sea State (calm / smooth / slight / moderate)	Calm
Wind Velocity range (mph)	0-5
Fresh/Salt Water	Fresh
Fuel Level at Testing (gal)	Full

PERFORMANCE SUMMARY

Top Speed (mph @ rpm)	33.6 @ 5650 RPM
Acceleration 0 - 20 mph (seconds)	7.2
Acceleration 0 - 30 mph (seconds)	
Best Fuel Economy (mpg @ rpm)	9.8 MPG @ 3500 RPM

PERFORMANCE CURVE



PERFORMANCE DATA

RPM	SPEED	FUEL CONSUMPTION	FUEL CONSUMPTION	RANGE	SOUND
RANGE	MPH	GPH	MPG	MILES	dB-A
1000	3.4	0.3	11.3		
2000	6.2	0.7	8.9		
3000	13.1	1.6	8.2		
3500	18.6	1.9	9.8		
4000	23.1	2.5	9.2		
4500	26.8	3	8.9		
5000	30.1	3.7	8.1		
5500	33.5	4.4	7.6		
6000					
Top RPM 5650	33.7	4.5	7.5		

ENGINE SPECIFICATIONS

Number of Engines	1
Engine	50 HP 4 Stroke
Horsepower	50HP
Cylinders	4
Drive or gear model and ratio	1.83:1

BOAT SPECIFICATIONS

Region/s sold	World Wide
Manufacturer	Crestliner
Website	www.crestliner.com
Boat Model	1600 Storm
Boat Type	Aluminum - console
Material	Aluminum
Length (in)	16
Beam (in)	75"
Max hp Capacity	50
Fuel Tank Capacity (gal)	6 Gallon Portable
Steering Type	Cable
Dry Boat Weight (lbs)	610
Mounting Bolt Hole (outboard)	3rd Hole

PROPELLER SPECIFICATIONS

Part Number	8M8026055
Part Number	
Part Number	
Part Number	
Mercury Name	Spitfire
Material	Aluminum
Diameter/Pitch	10.3 x 13
Number of Blades	4

MERCURY MARINE PO BOX 1939 FOND DU LAC, WISCONSIN 54936-1939

©2015 Mercury Marine, All Rights Reserved. Results on individual boats may vary depending on many factors, including weather and the condition of propeller, lower unit and boat bottom. Boat information based on manufacturer's published specifications.

800-MERCURY MERCURYMARINE.COM