

# BOAT HOUSE BULLETIN®



## A Factual Report from Mercury Marine

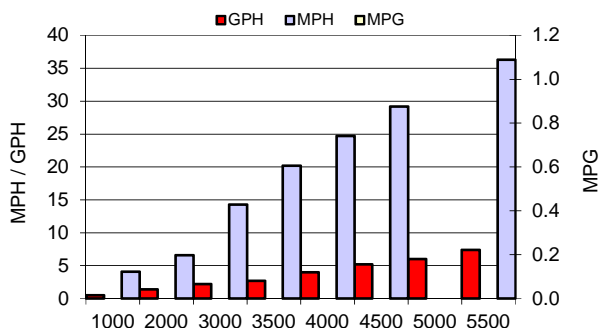
### TEST CONDITIONS

Test Date	6/11/2019
Test Conductors	Kenny/Dale
Boat Weight as Tested (pounds)	2198
Air Temperature (degrees Fahrenheit)	70
Elevation (feet)	1330
Wind Velocity (MPH)	10
Fresh/Salt Water	Fresh
Fuel Level at Testing (gallons)	10

### PERFORMANCE SUMMARY

Top Speed (MPH @ RPM)	38.9@5910
Acceleration 0 - 20 MPH (Seconds)	4.2
Acceleration 0 - 30 MPH (Seconds)	7.3
Best Fuel Efficiency (MPG @ MPH)	

### PERFORMANCE CURVE



### PERFORMANCE DATA

RPM	SPEED	FUEL	FUEL
RANGE	MPH	GPH	MPG
1000	4.1	0.5	
2000	6.6	1.4	
3000	14.3	2.2	
3500	20.2	2.7	
4000	24.7	4	
4500	29.2	5.2	
5000	33.0	6	
5500	36.3	7.4	
5910	38.9	8.3	

### ENGINE SPECIFICATIONS

Engine	4 ST
Horsepower	90
Cylinders	4
Gear Ratio	2.07
Model Number	

### BOAT SPECIFICATIONS

Crestliner	
Manufacturer	Crestliner
Website	
Boat Model	1700 Vision
Bottom Style/Paint	
Material	Aluminum
Length	17'6"
Beam	88"
Transom Height (inches)	25
Transom Angle (degrees)	14
Max HP Capacity	115
Fuel Tank Capacity (gallons)	20
Steering Type	NFB
Dry Boat Weight (pounds)	1190
Mounting Bolt Hole (outboard)	2

### PROPELLER SPECIFICATIONS

Part Number (RightHand)	
Part Number (Left Hand)	
Mercury Name	Vengeance
Material	SS
Diameter/Pitch	14 1/2x15
Number of Blades	3
M/C Bravo Three Propeller	
Part Number (Forward)	
Part Number (Rear)	

MERCURY MARINE PO BOX 1939 FOND DU LAC, WISCONSIN 54936-1939

©2012 Mercury Marine, All Rights Reserved. Results on individual boats may vary depending on many factors, including weather and the condition of propeller, lower unit and boat bottom. Boat information based on manufacturer's published specifications.

800-MERCURY MERCURYMARINE.COM

**A FACTUAL REPORT FROM MERCURY MARINE  
Boat House Bulletin Review**

**ENGINE:**  
**115 hp FourStroke**

**BOAT:**  
**Crestliner - 1700 Vision**

**PROP:**  
**SpitFire®**

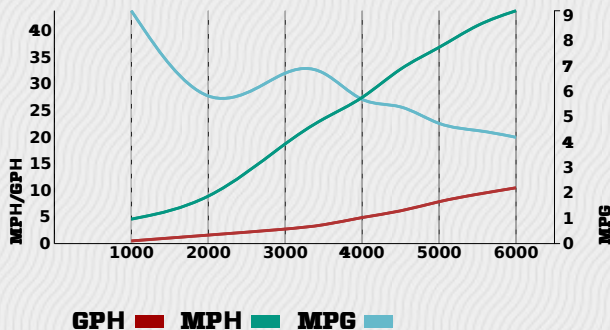


**PERFORMANCE SUMMARY**

Best Fuel Economy (MPG@RPM)	<b>7.0 @ 3500</b>
Top Speed (MPH@RPM)	<b>43.8 @ 6000</b>
Acceleration 0 - 20 MPH (seconds)	<b>3.9</b>
Acceleration 0 - 30 MPH (seconds)	<b>6.0</b>

RPM Range	Speed (MPH / kts)	Fuel (GPH)	Fuel (MPG)
1000	4.6 / 4.0	0.5	9.2
2000	7.5 / 6.5	1.6	4.7
3000	19.0 / 16.5	2.7	7.0
3500	23.7 / 20.6	3.4	7.0
4000	27.0 / 23.5	5.0	5.4
4500	33.3 / 28.9	6.0	5.6
5000	36.7 / 31.9	8.0	4.6
5500	41.4 / 36.0	9.3	4.5
6000	43.8 / 38.1	10.5	4.2

**PERFORMANCE CURVE**



**TEST CONDITIONS**

Test Date	<b>2015-06-08</b>
Test Conductor	<b>JN / KB</b>
Elevation	<b>1311 ft</b>
Air Temperature	<b>80 °F</b>
Wind Velocity	<b>10 MPH 9 kts</b>
Water Type	<b>Fresh</b>
Fuel Level at Testing	<b>20 gallons</b>

**ENGINE SPECIFICATIONS**

Engine	<b>115 hp FourStroke</b>
HP / kW	<b>115 / 84.6</b>
Engine type	<b>Inline 4</b>
Gearcase ratio	<b>2.07:1</b>

**BOAT SPECIFICATIONS**

Manufacturer	<b>Crestliner</b>
Website	<b><a href="http://www.crestliner.com/">http://www.crestliner.com/</a></b>
Boat Model	<b>1700 Vision</b>
Boat Type	<b>Deep V / Multi-species</b>
Material	<b>Aluminum</b>
Length	<b>17 ft 4 in</b>
Beam	<b>7 ft 4 in</b>
Max HP Capacity	<b>115</b>
Fuel Tank Capacity	<b>20.0 gallons</b>
Steering Type	<b>NFB Single Cable</b>
Dry Boat Weight	<b>1190 pounds</b>
Mounting Bolt Hole	<b>1</b>

## PROPELLER SPECIFICATIONS

Part Number	<b>8M8026590</b>
Mercury Name	<b>SpitFire®</b>
Pitch	<b>17.0</b>

© 2015 Mercury Marine. All Rights Reserved.

Reproduction in whole or in part without permission is prohibited. Mercury Marine is a division of Brunswick Corporation.