

BOAT HOUSE BULLETIN®



A Factual Report from Mercury Marine

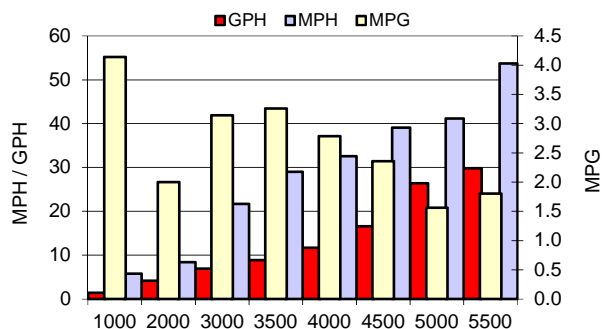
TEST CONDITIONS

Test Date	6/8/2015
Test Conductors	John Niebur/ Kenny Brauser
Boat Weight as Tested (pounds)	
Air Temperature (degrees Fahrenheit)	80
Elevation (feet)	1311
Wind Velocity (MPH)	10
Fresh/Salt Water	Fresh
Fuel Level at Testing (gallons)	full

PERFORMANCE SUMMARY

Top Speed (MPH @ RPM)	56.7@5900
Acceleration 0 - 20 MPH (Seconds)	5.4
Acceleration 0 - 30 MPH (Seconds)	8
Best Fuel Efficiency (MPG @ MPH)	3.3@29

PERFORMANCE CURVE



PERFORMANCE DATA

RPM	SPEED	FUEL	FUEL
RANGE	MPH	GPH	MPG
1000	5.8	1.4	4.1
2000	8.4	4.2	2.0
3000	21.7	6.9	3.1
3500	29	8.9	3.3
4000	32.6	11.7	2.8
4500	39.1	16.6	2.4
5000	41.2	26.4	1.6
5500	53.7	29.8	1.8
6000			#DIV/0!
Top RPM 5900	56.7	29.2	1.9

ENGINE SPECIFICATIONS

Engine	Verado
Horsepower	300
Cylinders	6
Gear Ratio	1.75:1
Model Number	

BOAT SPECIFICATIONS

Boat LOGO

Manufacturer	Crestliner
Website	
Boat Model	2250 Sportfish
Bottom Style/Paint	V
Material	Alum
Length	22'11"
Beam	102"
Transom Height (inches)	25"
Transom Angle (degrees)	14
Max HP Capacity	350
Fuel Tank Capacity (gallons)	54
Steering Type	Power
Dry Boat Weight (pounds)	2388
Mounting Bolt Hole (outboard)	3

PROPELLER SPECIFICATIONS

Part Number (RightHand)	825862A47
Part Number (Left Hand)	
Mercury Name	Tempest Plus
Material	Stainless
Diameter/Pitch	14.625X21
Number of Blades	3
M/C Bravo Three Propeller	
Part Number (Forward)	
Part Number (Rear)	

MERCURY MARINE PO BOX 1939 FOND DU LAC, WISCONSIN 54936-1939

©2012 Mercury Marine, All Rights Reserved. Results on individual boats may vary depending on many factors, including weather and the condition of propeller, lower unit and boat bottom. Boat information based on manufacturer's published specifications.

800-MERCURY MERCURYMARINE.COM