

BOAT HOUSE BULLETIN®



A Factual Report from Mercury Marine

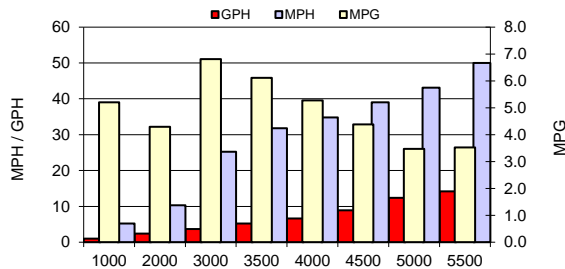
TEST CONDITIONS

Test Date	5/16/2018
Test Conductor	BC
Boat Weight as Tested (lbs)	2026 lbs
Air Temperature (degrees F)	88
Elevation (ft)	937
Sea State (calm / smooth / slight / moderate)	Calm
Wind Velocity range (mph)	0-5
Fresh/Salt Water	Fresh
Fuel Level at Testing (gal)	Full

PERFORMANCE SUMMARY

Top Speed (mph @ rpm)	53.1 @ 5800 RPM
Acceleration 0 - 20 mph (seconds)	3.8
Acceleration 0 - 30 mph (seconds)	5.3
Best Fuel Economy (mpg @ rpm)	6.8 MPG @ 3000 RPM

PERFORMANCE CURVE



PERFORMANCE DATA

RPM	SPEED	FUEL CONSUMPTION	FUEL CONSUMPTION	RANGE	SOUND
RANGE	MPH	GPH	MPG	MILES	dB-A
1000	5.2	1	5.2		
2000	10.3	2.4	4.3		
3000	25.2	3.7	6.8		
3500	31.8	5.2	6.1		
4000	34.8	6.6	5.3		
4500	39	8.9	4.4		
5000	43.1	12.4	3.5		
5500	50	14.2	3.5		
6000					
Top RPM 5800	53.1	14.3	3.7		

ENGINE SPECIFICATIONS

Number of Engines	1
Engine	150 4 Stroke
Horsepower	150
Cylinders	4
Drive or gear model and ratio	1.92:1

BOAT SPECIFICATIONS

Region/s sold	
Manufacturer	Crestliner
Website	www.crestliner.com
Boat Model	1800 Bay
Boat Type	Aluminum - console
Material	Aluminum
Length (in)	18'6"
Beam (in)	96"
Max hp Capacity	150HP
Fuel Tank Capacity (gal)	21 Gallons
Steering Type	Cable/Panther
Dry Boat Weight (lbs)	1216
Mounting Bolt Hole (outboard)	Top Hole

PROPELLER SPECIFICATIONS

Part Number	48-825860A47
Part Number	
Part Number	
Part Number	
Mercury Name	Tempest Plus
Material	SS
Diameter/Pitch	14 5/8 x 19
Number of Blades	3

MERCURY MARINE PO BOX 1939 FOND DU LAC, WISCONSIN 54936-1939

©2015 Mercury Marine, All Rights Reserved. Results on individual boats may vary depending on many factors, including weather and the condition of propeller, lower unit and boat bottom. Boat information based on manufacturer's published specifications.

800-MERCURY MERCURYMARINE.COM